

Introducing the Tomos Golden Bullet



**Stands for
Reliability**

Sure you can spend a lot more. But no moped delivers more than Tomos.

It takes European know-how to build a great moped.

While you're admiring the newest mopeds from Tomos, we'd like to impress you a bit with a reassuring fact: Tomos has been perfecting the fine art of moped manufacturing for over a quarter of a century. We're moped pioneers. With a basic goal that hasn't wavered from day number one. Simply, to build the finest quality mopeds at the best price possible.

Quality that won't let you down. To the countless thousands of Europeans who regard our mopeds as serious daily transportation, that's what Tomos is all about. Quality that can meet the challenge of cobblestone streets and winding hills... and skyrocketing fuel costs. Quality that, we hope, looks impressive on paper. And comes alive when you put Tomos to the test.

The Tomos Kickstart. It's the only way to start. And Tomos has it!

Get ready for the convenience of the Tomos Kickstart. Just one swift downward kick...and your Tomos is off and running like the swift, nimble charmer that it is. So forget about pedal-pushing starts. And remember that the Tomos Kickstart is just the beginning of a long list of performance features that make our low price seem all the more incredible.

Tomos makes the choice quite simple: Terrific. Or very terrific.

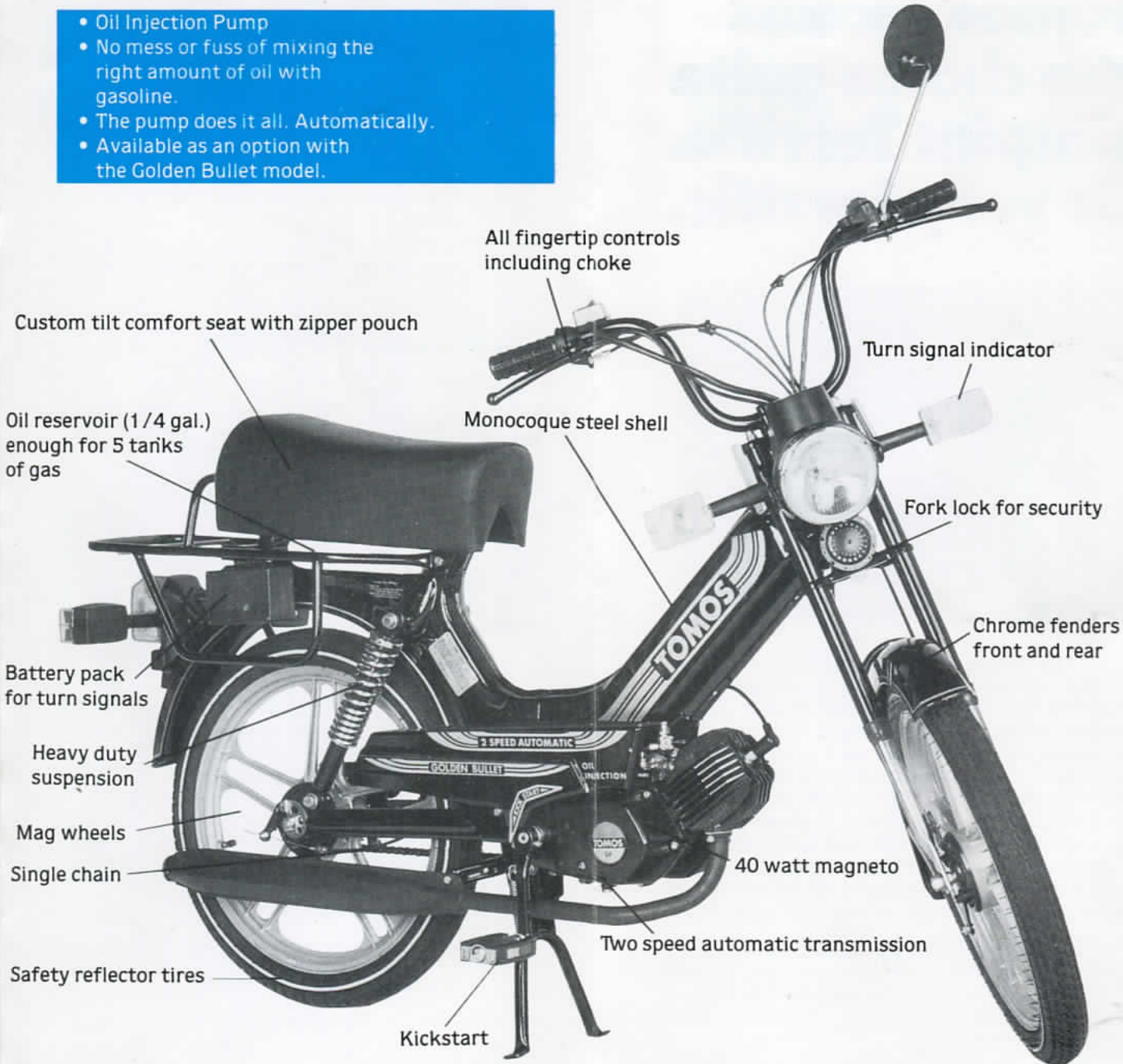


The Bullet At Tomos, quality has always won out over quantity. And so, we've summed up the state of the art in two terrific models. Number one, the free-spirited Tomos Bullet (see photo). Here's the dependable, low-cost way to have a great time, with easy reverse kickstart that leaves most other mopeds back at the starting line. There's more, of course. Like two-speed automatic transmission to power you along. Independent wheel suspension. And Tomos' time-tested quality throughout. But don't take our word for it, see for yourself. We think you'll agree it's the best moped value in the country today. Available in blue or red.

The Golden Bullet Where the Bullet and the Silver Bullet leaves off, comes the Golden Bullet with its extra extra class. A beautiful driving machine with style and outstanding performance. Beautifully designed in black and gold.

The Golden Bullet shares all the fine engineering features of the Bullet and Silver Bullet... But goes still a step further with the optional convenience of an improved oil injection system. It is the Golden Bullet. The best of all.

- Oil Injection Pump
- No mess or fuss of mixing the right amount of oil with gasoline.
- The pump does it all. Automatically.
- Available as an option with the Golden Bullet model.



A moped you can depend on.

When you choose Tomos, you're rewarding yourself with mile after mile of trouble-free ownership. You also have the peace of mind of knowing that, should servicing be required, replacement parts are easily and quickly available to your Tomos dealer. And that your new Tomos comes with a 4 month/4,000 mile factory warranty.

The Tomos tradition of quality and dependability. It's what you don't see that makes all the difference.

Specifications

| | |
|-----------------------|--|
| Engine type: | 1 cylinder, 2-cycle, air cooled |
| Horsepower: | 1.5 and 2 hpr. |
| Bore/Stroke: | 1.49/1.69 in. |
| Displacement: | 3cu. in. (49cc) |
| Fuel: | Gas/oil two-stroke mix (50:1 ratio) |
| Transmission: | 2-speed automatic |
| Power train: | Gear-driven chain |
| Ignition: | 40w |
| Frame: | Monocoque welded steel shell |
| Suspension: | Front: telescopic spring fork Rear: independent with dual shock absorbers |
| Tires: | 20 x 2.25 in. |
| Lights: | Headlight: 6 volt/20w Tail light: 6 volt/5-10w |
| Fuel capacity: | 1 gallon / 1 pint reserve |
| Dimensions: | Weight 95 lbs. Wheelbase 42-1/2 in. Overall length 64-1/2 in. Overall width 27 in. Overall height 39 in. |

EXCLUSIVE IMPORTER AND FACTORY
REPRESENTATIVE FOR USA

UNITED TRADE REPRESENTATIVES INC.
Fort Lee, N.J. 07024 phone 201 585 8284

Sales Office for East Coast: Spartanburg, SC
phones (803) 574 7917 and 1 800 845 7007

UNITED TRADE REPRESENTATIVES

*Introduces
the*
**TOMOS
TT-SERIES**



Stands for Reliability

TOMOS BULLET

While you are admiring the newest mopeds from Tomos as shown in this brochure, we'd like to impress you with a few facts:

Only the Tomos family of mopeds features the unique **turbo loc** 2 speed transmission. We have what it takes to accelerate you smoothly, even up the steepest incline, the quality which nobody else has.

Tomos mopeds also contain the exclusive **posi-start** feature. There are no levers to squeeze nor cables to break. Just one swift downward kick and your Tomos is off and running.

As in other areas of moped design, Tomos has pioneered the **auto-mix** oil injection system for mopeds. If you decide on an **auto-mix** equipped Tomos, you have chosen the "state-of-the-art" alternative to mixing oil and gas. With the **auto-mix** system, just drive to the gas station and fill 'er up.

SPECIFICATIONS

| | |
|---------------|--|
| Color | Blue or Red |
| Engine type | 1 cylinder 2 cycle air cooled |
| Horsepower | 1.5 and 2 BHP |
| Bore/Stroke | 1.49 / 1.69 in. |
| Displacement | 49cc |
| Fuel | Gas/oil 50:1 pre-mix |
| Transmission | 2 speed automatic turbo loc |
| Ignition | 12V / 28W |
| Frame | Monocoque welded steel shell |
| Suspension | Front: motorcycle type telescopic spring fork Rear: independent with dual shock absorbers |
| Lights | Headlight 12V / 21W Taillight 12V / 5-10W |
| Fuel Capacity | 1 gallon / 1 pint reserve |

STANDARD FEATURES

Posi-start kickstarter
2 speed automatic **turbo loc** transmission
Luggage carrier



TOMOS TT LX

IT TAKES **TOMOS** KNOW-HOW TO BUILD A GREAT MOPED.

Once again the Tomos factory has produced a truly world class moped line especially for the U.S. Combining the sleek elegance of European motorcycle styling with the reliability and power of the Tomos drive train, the Tomos TT Bullet Series is destined to be the standard for all mopeds to be compared.

SPECIFICATIONS

| | |
|---------------|--|
| Color | Black / Gold trim |
| Engine type | 1 cylinder 2 cycle air cooled |
| Horsepower | 1.5 and 2 BHP |
| Bore/Stroke | 1.49 / 1.69 in. |
| Displacement | 49cc |
| Fuel | Gas/oil auto-mix injection system |
| Transmission | 2 speed turbo loc automatic |
| Ignition | 12V / 75W |
| Frame | Monocoque welded steel shell with integrated top tank |
| Suspension | Front: motorcycle type telescopic spring fork Rear: deluxe chrome coil spring |
| Lights | Headlight 12V / 21W Taillight 12V / 5-10W |
| Fuel Capacity | 1 gallon / 1 pint reserve |



* Matching fairing not included

STANDARD FEATURES

2 speed **turbo loc** transmission
Posi-start kickstarter
Turn signal - factory integrated
Gold mag wheels
Auto-mix oil injection system
Reflective side wall tires
Luggage carrier
Chrome coil spring suspension
Black tone equipment

TOMOS GOLDEN BULLET

TOMOS GOLDEN BULLET

STANDARD FEATURES

2 speed **turbo loc** transmission
Posi-start kickstarter
Turn signal - factory integrated
Gold mag wheels
Auto-mix oil injection system
Reflective side wall tires
Luggage carrier
Chrome coil spring suspension
Black tone equipment

SPECIFICATIONS

| | |
|---------------|---|
| Color | Black / Gold trim |
| Engine type | 1 cylinder 2 cycle air cooled |
| Horsepower | 1.5 and 2 BHP |
| Bore/Stroke | 1.49 / 1.69 in. |
| Displacement | 49cc |
| Fuel | Gas/oil auto-mix injection system |
| Transmission | 2 speed turbo loc automatic |
| Ignition | 12V / 75W |
| Frame | Monocoque welded steel shell |
| Suspension | Front: motorcycle type telescopic spring fork Rear: deluxe chrome coil spring |
| Lights | Headlight 12V / 21W Taillight 12V / 5-10W |
| Fuel Capacity | 1 gallon / 1 pint reserve |



TOMOS TT BULLET

(shown on front cover)

SPECIFICATIONS

| | |
|---------------|--|
| Color | Blue or Red |
| Engine type | 1 cylinder 2 cycle air cooled |
| Horsepower | 1.5 and 2 BHP |
| Bore/Stroke | 1.49 / 1.69 in. |
| Displacement | 49cc |
| Fuel | Gas/oil auto-mix injection system |
| Transmission | 2 speed automatic turbo loc |
| Ignition | 12V / 28W |
| Frame | Monocoque welded steel shell with integrated top tank |
| Suspension | Front: motorcycle type telescopic spring fork Rear: independent with dual shock absorbers |
| Lights | Headlight 12V / 21W Taillight 12V / 5-10W |
| Fuel Capacity | 1 gallon / 1 pint reserve |

STANDARD FEATURES

Posi-start kickstarter
2 speed automatic **turbo loc** transmission
Auto-mix oil injection system
Luggage carrier
Black tone equipment

TOMOS MEANS DEPENDABILITY.

When you choose Tomos, you're rewarding yourself with mile after mile of trouble-free ownership. You also have the peace of mind of knowing that, should servicing be required, replacement parts are easily and quickly available to your Tomos dealer. And that your new Tomos comes with a 4 month / 4,000 mile factory warranty.

The Tomos tradition of quality and dependability. It's what you don't see that makes all the difference.

EXCLUSIVE IMPORTER AND FACTORY
REPRESENTATIVE FOR U.S.A.

UNITED TRADE REPRESENTATIVES INC.
Fort Lee, N.J. 07024

Sales Office: Spartanburg, S.C.
phone 803 574 7917

THREE-WHEEL MOPEDS



\$2,495



\$2,295

IDEAL USES ▴

Senior Citizens
Handicapped
Errands
Newspaper Delivery

Police Department
Military
Meter Reading
Security Patrol

Universities
Resort Rentals
Mobile Home Parks
Light Industrial

STANDARD FEATURES ▴

Posi-start kickstarter
2 speed automatic turbo loc transmission
Speedometer
Tail and brake lights

High and low beams
Engine "kill" switch
Front fork lock with key
Rearview mirror

Safety reflectors
Large "comfort ride" seat
Horn
20 MPH / 100 MPG

SPECIFICATIONS ▴

Engine type: 1 cyl., 2 cycle, air cooled
Dimensions: 76L x 34-1/2W
Brakes: Front & rear drum

Fuel: Unleaded (no gasohol)
Oil: Moped / chain saw
Displacement: 49cc

Color: Red
Horsepower: 2BHP
Weight: 160-170 lbs.

Ice Cream Box Model

Holds 40-60 dozen prepackaged frozen novelties
(ice cream - yogurt - water ices)

- High visibility advertising impact
 - Licensed as a moped in most states
 - No endorsement necessary
 - Low insurance rates
 - Low operating & maintenance costs
 - Easy parking
 - Freezer box charges to -25° F overnight
 - 5 cubic foot box (ID 26Lx21-1/2Wx21H)
- Check county and city vending regulations*



\$3,995

STANDARD FEATURES & SPECIFICATIONS ▴

Same as above except...

Color: White
Turn Signals
Oil-injected

Weight: 450 lbs.
Dimensions: 88Lx34-1/2Wx46H
Umbrella is \$75 option

DEALER

All models are backed by a Parts & Labor Warranty of 6 months or 4,000 miles, whichever comes first

Li'l Cruiser

Designed for travelers who don't stop once they arrive at a destination. Li'l Cruiser is custom engineered with a unique 4-wheel design for safety. Easily starts with a gentle back pedal.



Surrey Top



Wind Screen



RV Moped
Carrier for
motorhomes and
5th wheelers



Custom Cover

SPECIFICATIONS

- Dimensions: 36" H X 36" W X 84" L
- Rear Storage: 20" W X 30" L X 18" deep
- 175 pounds
- 1 cylinder - 2 cycle air-cooled
- Auto mix oil injection
- Unleaded gas
- Turbo Loc 2-speed transmission
- 100 mpg (varies depending on weight)
- 25 mph
- 1.5 braking horse power
- 49 cc

FEATURES

- Electronic ignition
- Engine "Kill" Switch
- Turn Signals
- Tail and Brake lights
- High and low beams
- Speedometer
- Rear view mirror
- Horn
- Front fork lock w/key
- Ample storage for groceries to golf bags

ANNOUNCING !!

All carriers come equipped with a 2" ball for towing cars.

WARNING: All 4 wheels of the car must be on the road when towing.



*When a car is too
much & a bike isn't enough*

Festivals

Rallies

Conventions

Dining

Museums

Flea Markets

Grocery Shopping

Gift Shopping

Golf Courses

Tennis Courts

Visit Friends

Tourist Sites

or just go exploring



Li'l Cruiser

2-Passenger Multi-Use Moped

Designed for travelers who don't stop once they arrive at a destination. Li'l Cruiser is custom engineered with a unique 4-wheel design for safety.



TOMOS

A35 Model Line



*There Is
A Difference*

Modern Motorcycle Styling . . . Proven European Design

*Since its inception the Targa LX has set the standard
by which other mopeds are judged.*

Specifically designed for the U.S. Market, it continues to be the #1 selling moped in our model line. Its "Top Tank" design, plus the fact that all features available are standard on the LX, means you will be riding the finest moped available.

TARGA LX
is the Difference!



Optional Colors:

Black, Yellow, Blue

(See Your Local Dealer for Current Color Availability)



Standard Features*

(Decal and Wheel Styles May Vary)

- ◆ A35 engine (exclusive Tomos design)
- ◆ 2-speed auto transmission
- ◆ custom mag wheels
- ◆ reed valve engine
- ◆ custom graphics
- ◆ 100+ miles per gallon
- ◆ reversible mirror
- ◆ coil springs shocks
- ◆ 6 month, 4,000 mile warranty
- ◆ CDI electronic ignition system
- ◆ high-low beam headlight
- ◆ luggage rack
- ◆ sport tires
- ◆ induction cowling for engine
- ◆ auto mix oil injection
- ◆ turn signals
- ◆ custom motorcycle styling for USA
- ◆ deluxe sport fairing
- ◆ pedal or kickstart models optional
- ✓ exclusive quality assurance

This is what it means to ride the #1 selling Moped in the USA.

After all, Tomos is the single largest exporter of Mopeds to the United States. Over 20 years of innovation and refinement are built into every Tomos that exits the assembly line. With European craftsmanship being second to none, you are assured of owning the finest Moped with the highest commitment to quality. From the classic Sprint and Targa to the modern motorcycle styling of the Targa LX, Tomos' devotion to quality is evident throughout. Also you will have the peace-of-mind knowing you are protected by a 6 month, 4,000 mile warranty. Why not find out what thousands of others have already learned?

With Tomos Mopeds ... there truly is a
Difference!



Optional Colors:

Teal, Silver

(See Your Local Dealer for
Current Color Availability)

TARGA

Standard Features*

(Decal and Wheel Styles May Vary)

- ◆ A35 engine (exclusive Tomos design)
- ◆ 2-speed auto transmission
- ◆ custom mag wheels
- ◆ reed valve engine
- ◆ custom graphics
- ◆ 100+ miles per gallon
- ◆ reversible mirror
- ◆ coil springs shocks
- ◆ 6 month, 4,000 mile warranty
- ◆ CDI electronic ignition system
- ◆ high-low beam headlight
- ◆ luggage rack
- ◆ traditional Moped styling
- ◆ sport tires
- ◆ induction cowlings for engine
- ◆ auto mix oil injection
- ◆ turn signals
- ◆ pedal or kickstart models optional
- ✓ exclusive quality assurance



SPRINT

Standard Features*

(Luggage Rack Optional ♦ Decal and Wheel Styles May Vary)

- ♦ A35 engine (exclusive Tomos design)
- ♦ 2-speed auto transmission
- ♦ custom mag wheels
- ♦ reed valve engine
- ♦ custom graphics
- ♦ 100+ miles per gallon
- ♦ reversible mirror
- ♦ coil springs shocks
- ♦ 6 month, 4,000 mile warranty
- ♦ CDI electronic ignition system
- ♦ high-low beam headlight
- ♦ storage under seat
- ♦ premix oil
- ♦ traditional Moped styling
- ♦ pedal or kickstart models optional
- ✓ exclusive quality assurance



Optional Colors:

Black, Silver

(See Your Local Dealer for
Current Color Availability)



Keep Safety First!

Always wear protective apparel when riding. State laws vary regarding the use of a helmet. Tomos recommends that it be standard practice when operating any 2-wheel vehicle. Remember to obey all applicable laws for on-road use of this vehicle in your state.

*New Colors
& Graphics*

*New
for '99*

TOMOS



Available in
Pedal or
Kick Start
Version

| | |
|-------------------|---|
| Engine | Single Cylinder, Two Cycle, Reed Valve, Air Cooled |
| Bore & Stroke | 38 x 43mm |
| Compression Ratio | 9.1:1 |
| Torque | 2:58 ft. lbs. |
| Gear Box | Automatic Two Speed with Two Stage Centrifugal Clutch |
| Ignition | CDI Electronic Ignition |
| Lighting | 12v 50w to 12v 80w |
| Fuel Consumption | 100+ mpg |
| Wheels | 16" Mag Wheels |
| Brakes | 105mm |
| Suspension | Front Telescopic Fork, Rear Coil Spring Shock |

All Tomos mopeds feature the advanced, automatic *A35* engine. Our unique 2-speed centrifugal clutch design ensures that you have the power needed for the most demanding roads. In addition, the engine will shift gears automatically when it achieves its optimum R.P.M. range. This allows you to concentrate on safe riding, knowing that your A35 is doing all the work. Tomos engines are made of the finest components available, machined and assembled by hand.

*A35 = Power with
Superior Performance!*



Visit Our
Web Site for
more info!

www.tomospro.com

Tomos Mopeds Sold By:

Exclusive Importer and Factory Representative for U.S.A.
Tomos Products Division of STR, Inc.

* Features and Color specifications subject to change without notice.

Photography by Steve Fincher Photography ♦ Design and Printing by Altman Printing Co., Inc.

NEW
FOR 1995

**from the world's
premier Moped
manufacturer**



TOMOS

Sprint **Red**



Sprint **Black**

Traditional Step-Thru

Specifications

Standard Features
(Includes Sprint Only)

Turbo Loc 2-Speed Transmission

Mag Wheels

Tomos Posi-Start

Reed Valve

100 + Miles Per Gallon

1 Gallon Gas Tank with

1 pint reserve

Left-Hand Mirror

Coil Spring Shocks

6-month, 4,000-mile Warranty

Tomos Exclusive: Quality
Assured Program

Targa **Burgundy**



Targa **Emerald Green**

Motorcycle Styling

Specifications

Standard Features

(Includes Targa and Targa LX)

Luggage Rack
Locking Gas Cap
Viper Tread Tires
Ram Air Induction Cooling System
Whisper-Smooth Throttle System
CDI Electronic Ignition
Auto Mix Oil Injection
Deluxe Styling
Turn Signals
Turbo Loc 2-Speed Transmission
Sport Fairing
Mag Wheels
Tomos Posi-Start
Reed Valve
100 + Miles Per Gallon
1 Gallon Gas Tank with 1 pint reserve
Left-Hand Mirror
Coil Spring Shocks
6-month, 4,000-mile Warranty
Tomos Exclusive: Quality
Assured Program



Targa LX Jet Black



Targa LX Forest Green



Targa LX Dynamic Red

Superior Styling

Specifications

Standard Features

Oil Injection

Turbo Loc 2-Speed Transmission

Whispa-Smooth Throttle System

Pro-Link Suspension

Mono Shock

Designed by Giugiaro, Italy

Turn Signals

Locking Storage Department

Omni Adjustable Luggage Rack

CDI Electronic Ignition

Mag Wheels

Tomos Posi-Start

Reed Valve

100 + Miles Per Gallon

1 Gallon Gas Tank with 1 pint reserve

Left-Hand Mirror

Coil Spring Shocks

6-month, 4,000-mile Warranty

Tomos Exclusive: Quality

Assured Program

TOMOS Mopeds Sold By:

Colibri by TOMOS



**EXCLUSIVE IMPORTER AND FACTORY REPRESENTATIVE FOR U.S.A.
TOMOS PRODUCTS DIVISION OF STR, INC.**

TOMOS

HARTFORD MOPEDS

499 (rear) Farmington Ave.
Hartford, CT 06105
(203) 236-0062



ONE WHEEL DRIVE MOPED

499 REAR FARMINGTON AVE.
HARTFORD, CT. 06105
TELEPHONE (203) 236-0062

2 SPEED AUTOMATIC
KICKSTART

Behind the Name

For almost a quarter of a century, Tomos has been designing, engineering and manufacturing its own line of mopeds. Today the Tomos family of fine products includes automobiles, motorcycles, outboard motors, pumps and other motorized machinery.

With major manufacturing plants in Yugoslavia, Holland and Ghana, Tomos is totally committed to maintaining its international reputation for superb craftsmanship, with exacting quality standards.

Engineering Excellence

Tomos maintains one of the largest in-house technical research departments of its kind in the

manufacturing world. The Tomos Institute specializes in the advanced development of the two-stroke engine. Every Moped engine is factory built and factory tested. Innovations like the 2 speed automatic clutch and the simplified, easy reverse kick start are only a part of the continuing Tomos engineering success

story. Over the years the Tomos family of motorized products has won a host of excellence awards.



* Warranty - 3 months or 3,000 miles

* Every Tomos is built to conform with or exceed all state and federal safety regulations.

More For

Today's Tomos is the result of years of added extras like automatic transmission and more. Tomos offers a commitment.

Thoughtful seats and independent suspension make for a smoother ride.

The highly designed, built and finished moped offers miles and miles of operation. Economical.

Even with a suggested retail price comparable to other mopeds, purchases direct. No middleman.

* To maintain its reputation for design innovation, Tomos and specifications without availability of certain models.



Nuts &

| | |
|--------------|--------------------------------------|
| Engine type | 1 cylinder 2-cycle air cooled |
| Horsepower | 1, 1.5 and 2 |
| Bore/stroke | 35/43 mm |
| Fuel | gas/oil two-stroke mix (50: 1 ratio) |
| Transmission | Two speed automatic |
| Power Train | gear-driven chain |
| Ignition | ducati |
| Frame | monocoque welded steel shell |



1775 B
Suite
New York, NY

Your Money

Tomos moped is the
of development. With
the 2-speed automatic
and kick reverse start,
greater riding enjoy-

extras like padded
dependent wheel sus-
Tomos a much

reliable factory de-
d tested engine of-
miles of trouble-free
conomy up to 150 mpg.
All those added extras,
retail price is below
models. Your dealer
tly from the factory.
is involved.

*Tomos for engineering excellence and
reserves the right to change details
advance notice. Color selection and
models may vary according to states.*



Bolts

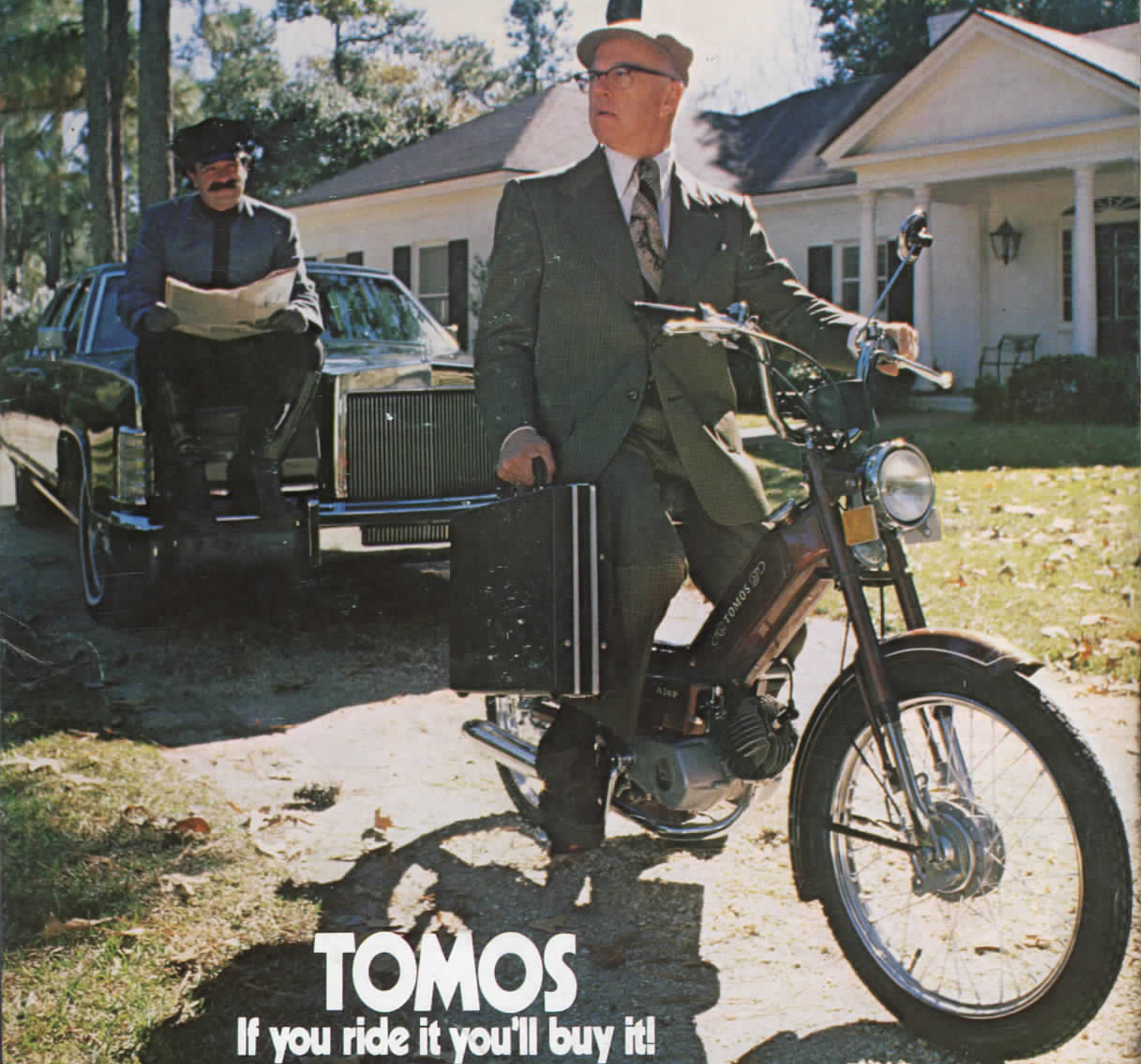
| | |
|---------------|---|
| Suspension | Front: telescopic spring fork Rear: independent with dual shock absorbers |
| Tires | 20 x 2.25 |
| Lights | headlight: 6 volt tail light: 6 volt |
| Fuel Capacity | Fuel capacity 1 gallon 1 pint reserve Weight 95 lbs. Wheelbase 42½ in. Overall length 64½ in. Overall width 27 in. Overall height 39 in. |



roadway
e 432
New York 10019



*"I'll take
the Tomos,
Thomas"*



TOMOS
If you ride it you'll buy it!

*Bigger than a bike . . .
Smaller than a cycle . . .
More versatile than both.*



Parking Enforcement

Bike Paths

Gated Communities

Airport Security

Fire Departments

City Parks

Parking Lots

Downtown Malls

Special Events

Military Facilities

Campus Security

Resort Areas

Campgrounds

Waterfront Areas

Prison Patrol



Security-Cruiser

*A multi-use Moped designed for
Crime Prevention, Public Relations & more!*

* Not recommended for high speed chases



Professional & Approachable Image

The public feels safe seeing the . . .



OPTIONS:
Strobe light in
red, blue or
amber. Pole light
in red, blue or
amber. Custom
designed Nicad
battery and
charger included.



Security-Cruiser

Shipping Weight: Domestic 250 lbs. • International 350 lbs.

Dimensions: 36" high X 37" wide X 76" length

- Option to pedal or use 49cc engine
No waiting for batteries to charge
- More miles out of your budget
Economical with minimal maintenance & 100+ miles per gallon
- Peace of mind and years of reliable service
19 year history of high quality manufacturing
- 25+ Miles Per Hour
- 100 Miles Per Gallon
- 1.5 Braking Horse Power
- Auto Mix Oil Injection
- Turbo Loc 2-speed Transmission
- Easy Posi Start Electronic Ignition
- 1 Cylinder, 2 Cycle Air Cooled Engine
- Unleaded Fuel
- Brakes: Front & Rear Drum
- Turn Signals
- Tail & Brake Lights
- Speedometer
- Engine "Kill" Switch
- Front Fork Lock with Key
- Rear View Mirror
- Horn



* Not designed for steep inclines.

** Graphics not included.

1993 MOPED SERIES



A35 SPRINT



A35 BULLET TT



A35 GOLDEN BULLET

TOMOS

Sprint down the road on the newest Tomos

Imagine sprinting down the road, wind rustling through your hair. You notice your surroundings. The greenery takes on a fresher look and smell. People are everywhere. You notice looks of admiration.

That sleek, new Sprint Moped from Tomos, has certainly made riding enjoyable again. The low cost surprised you, considering all of the new features - contemporary design, durability, and fashion - targeted especially for the U.S. market.

The Sprint Moped is the first of a future series from Tomos combining all of the design and expertise of more expensive models. It is sure to become one of the most popular cycles ever offered by Tomos.

Its main features include an A 35 Super Engine, Mag-Style Sport Wheels, two-speed automatic transmission, all in a very affordable

package.

The engine is torque enhanced through Reed valve intake and delivers 32 percent higher output than previous years' moped models.

That, plus a computer designed 2 speed automatic transmission, make for a smooth, enjoyable ride.

Fuel tank capacity is 1 gallon with 1 pint reserve. The Mag-Style sport wheels are die cast for distortion free running.

For fashion, comfort, and

most important of all, your budget, the Tomos Sprint Moped is built especially for you and your lifestyle.

When you see the Sprint, you'll know that you're choosing a product from the world's premier manufacturer of mopeds.

Tomos means dependability. You will soon discover that you are rewarding yourself with mile after mile of trouble-free ownership. You also have peace of mind knowing that, should servicing be required, replacement parts are easily and quickly available to your Tomos dealer. And that your new Tomos comes with a 6-month factory warranty.

You can't see the Tomos tradition of quality and dependability. But you can feel it. That's what makes the difference.

**See the
A35 Sprint
specifications
on back page.**



R

Cruise in style with the full-featured Bullets

Bite the bullet and go where many have gone before. To a Tomos Moped showroom, that is.

The restyled Bullet series from Tomos is sure to become one of the most exciting products to hit the moped marketplace in years. You can see all the newly redesigned Bullets - the Golden Bullet, Bullet TT and the Golden Bullet TT/LX - at a Tomos dealer near you.

The vibrant colors, high performance and durability, make this series from Tomos one of the most awaited in years. Choose one of the models and see at once why the moped industry is abuzz about these new offerings from Tomos, the first name in quality mopeds.

Each of the Bullets is powered by a state of the art A35 Super torque enhanced engine that offers 32 percent better performance than previous moped models. A computer designed, 2 speed automatic transmission, along with a special oil injection system designed for Tomos by Mikuni, make this a reassuring ride for anyone needing short distance transportation.

The Mikuni oil injection system delivers precise oil to gas ratios for maximum

engine life and clean combustion without the inconvenience and mess of premixing. The fuel tank holds 1 gallon with 1 pint in reserve.

The sporty look of each model is also sure to attract looks of envy from those sputtering around on ordinary scooters. Factor in the reasonable price and the Tomos Bullet series appears to be a sure winner.

See one of the elaborately styled Bullets from a distance and you'll wonder why you hadn't bought one sooner. Step into a showroom and make your vision become a reality.

When you choose a Tomos Moped, you're rewarding yourself with not only mile after mile of trouble-free ownership, but fashionable design, durability and styling as well. You're also buying the Tomos name which is synonymous with quality workmanship. It's the standard by which all moped manufacturers strive for, but can't quite reach.

**See the
A35 Bullet Series
specifications
on back page.**



SPECIFICATIONS

A35 BULLET SERIES ENGINE - STANDARD ALL MODELS

- Turn Signals, all models

(80 W constant output magneto, no messy batteries)

- Oil Injection, all models

(Designed exclusively for Tomos by Mikuni)

- Deluxe Fairing, all models

ALL MODELS - INCLUDING SPRINT

- Mag Wheels
- 2 Speed Turbo Loc Transmission.
- Tomos Exclusive Posi Start.
- Reed Valve - 32% Increase in Power Output Response
- 100 + Miles Per Gallon
- 1 Gallon Gas Tank with 1 Pint Reserve.
- Left-Hand Mirror.
- Coil Spring Shocks.
- 6 Month, 4,000 Mile Warranty.

TOMOS Mopeds Sold By:



A35 BULLET

TOMOS

EXCLUSIVE IMPORTER AND FACTORY REPRESENTATIVE FOR U.S.A. TOMOS
PRODUCTS DIVISION OF STR, INC.

200 Northeast Drive • Spartanburg, SC 29301 • 803-574-7917

A35 Bullet Series



TOMOS

The Finest Mopeds Made Anywhere . . .

Colibri

ENGINE A 35 SUPER

Torque enhanced through Reed valve intake and expansion chambered exhaust. 2 cycle, air cooled, 49 cc displacement, 1.5 BHP.

Computer designed, 2 speed automatic transmission.

OIL INJECTION BY MIKUNI

Delivers precise oil to gas ratios for maximum engine life and clean combustion without the inconvenience and mess of premixing.

Fuel tank capacity is 1 gallon with 1 pint reserve.

MONO SHOCK SUSPENSION

Allows the engine to float with the rear wheel, this results in the smoothest possible ride with virtually no vibration.

FOLDING TURN SIGNALS

Signal units retract for easy storage.

MAG-STYLE SPORT WHEELS

Die cast for distortion free running. Wheels take 16"x2 1/4" tire inflated to 21 lbs. front, 31 lbs. rear.



Mono Shock Suspension System



High Performance Engine



Speedometer



Oil Injection System



Fold-in Direction Indicators

A35 Bullet / A35 TT Bullet as seen on front cover...

A35

ENGINE A 35 SUPER

Torque enhanced through Reed valve intake and tuned exhaust.

2 cycle, air cooled, 49 cc displacement, 1.5 BHP.

Computer designed, 2 speed automatic transmission.

OIL INJECTION BY MIKUNI

Delivers precise oil to gas ratios for maximum engine life and clean combustion without the inconvenience and mess of premixing.

Fuel tank capacity is 1 gallon with 1 pint reserve.

FLEXIBLE TURN SIGNALS

Greatly reduce the possibility of damage.

TOMOS MEANS DEPENDABILITY.

When you choose Tomos, you're rewarding yourself with mile after mile of trouble-free ownership. You also have peace of mind knowing that, should servicing be required, replacement parts are easily and quickly available to your Tomos dealer. And that your new Tomos comes with a 6 month factory warranty.

The Tomos tradition of quality and dependability, it's what you don't see that makes all the difference.

Flexible Turnsignals

Alu-cast Wheels With
Drum Brakes

Mikuni Oil
Pump

Newly Designed Engine
With 32% Higher Output



Oil Injection System



High Torque Engine



Flexible Turnsignals

TOMOS

The First Name In Quality Mopeds

**EXCLUSIVE IMPORTER AND FACTORY REPRESENTATIVE FOR U.S.A.
UNITED TRADE REPRESENTATIVES INC.**

Business Office: Fort Lee, N.J. 07024

Sales Office: Spartanburg, S.C.

803-574-7917