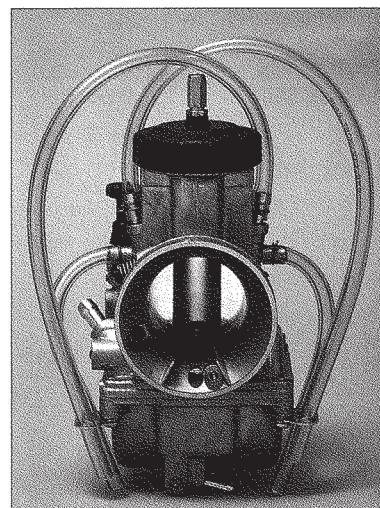
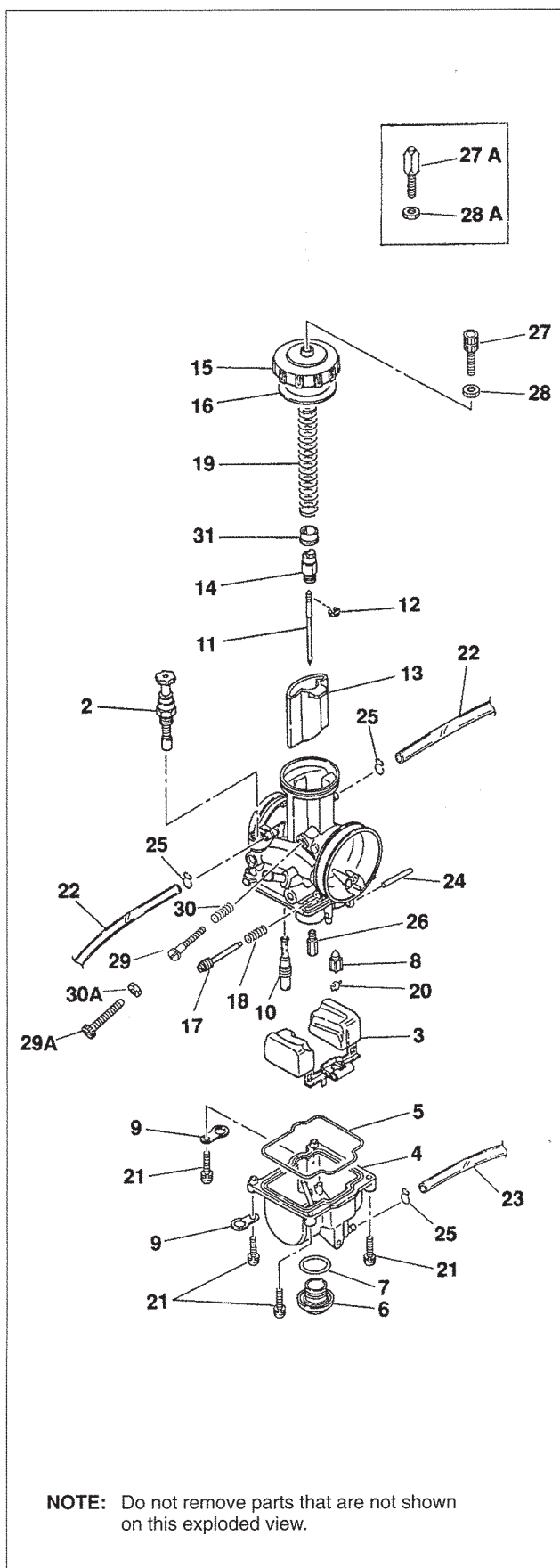


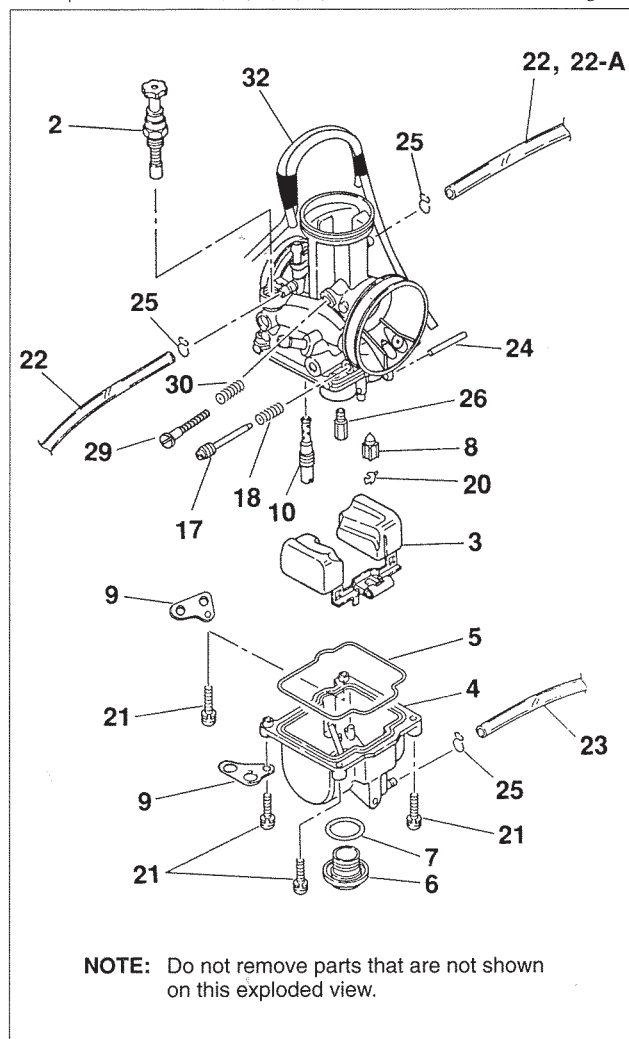
PWK 33, 35, 36, 38, 39 Carburetor Exploded View



PWK 38, Quad vents/Airstriker

Quad Vents/Air Strikers

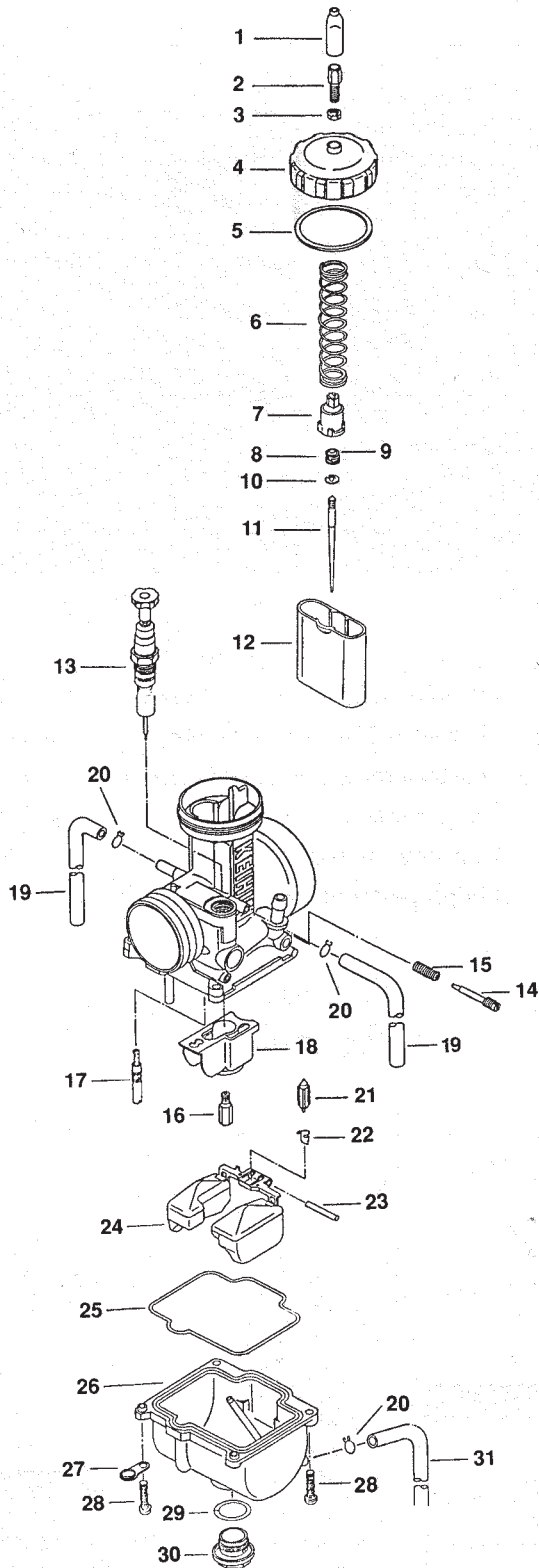
* See parts number 11, 12, 14, 15, 16, 19, 27, 28, 31 from next drawing.



PWK 33 – 39 Carburetor Parts List

	DESCRIPTION	CARB. SIZE			QUAD VENT	QUAD VENT	QUAD VENT
		PWK33			PWK36	AIR STRIKERS	AIR STRIKERS
			PWK35	PWK38 & 39		PWK35	PWK38
2	STARTER VALVE COMP.	1166-818-2101	<-----	<-----	<-----	<-----	<-----
3	FLOAT	W1310-079-9921	<-----	<-----	<-----	<-----	<-----
4	FLOAT BOWL COMP	W1350-311-9910	<-----	<-----	<-----	<-----	<-----
5	GASKET FLOAT BOWL	16163-ND4-7510-M1	<-----	<-----	<-----	<-----	<-----
6	PLUG SCREW	16162-ND4-7511-M1	<-----	<-----	<-----	<-----	<-----
7	O-RING PLUG SCREW	16173-001-0040	<-----	<-----	<-----	<-----	<-----
8	FLOAT VALVE COMP.	1062-814-2101	<-----	<-----	<-----	<-----	<-----
9	ANCHOR PLATE Old No.	16179-428-6710-M1 (16179-428-6711-m1)	<-----	16179-428- 6710-M1	16179- KZ4-6900	16179- KZ4-6900	<-----
10	SLOW JET	N424-21XXX	<-----	<-----	<-----	<-----	<-----
11	JET NEEDLE	N427-48XXX	<-----	<-----	<-----	<-----	<-----
12	CLIP JET NEEDLE	16115-169-0040	<-----	<-----	<-----	<-----	<-----
13	THROTTLE VALVE	N502-15XXX	<-----	N502-17X00	<-----	N502-15X00	N502-17X00
14	CABLE HOLDER	1101-804-2001	<-----	<-----	<-----	<-----	<-----
15	TOP	1030-840-2001	<-----	<-----	<-----	<-----	<-----
16	GASKET	16110-ND5-7610-M1	<-----	<-----	<-----	<-----	<-----
17	AIR ADJUST SCREW	W1446-231-9900	<-----	<-----	<-----	<-----	<-----
18	SPRING	W1711-416-9900	<-----	<-----	<-----	<-----	<-----
19	SPRING THROTTLE	1290-917-2001	<-----	1290-920- 2001	<-----	1290-917- 2001	1290-920- 2000
20	CLIP, FLOAT VALVE	0405-019-1000	<-----	<-----	<-----	<-----	<-----
21	SCREW, FLOAT BOWL Old No.	N114-04163 (N114-04160)	<-----	<-----	<-----	<-----	<-----
22	BOWL VENT PIPE	95003-07042-31	<-----	95003- 07048-31	95003- 07042-31	95003- 07048-31	<-----
22A	BOWL VENT PIPE	N/A	N/A	N/A	0803-805- 2001	N/A	N/A
23	OVERFLOW PIPE	95003-05033-31	<-----	<-----	<-----	<-----	<-----
24	FLOAT PIN	W9525-25250	<-----	<-----	<-----	<-----	<-----
25	CLIP	W9535-35000	<-----	<-----	<-----	<-----	<-----
26	MAIN JET	99101-357-XXX0	<-----	<-----	<-----	<-----	<-----
27	CABLE ADJUSTER	1036-804-2000	<-----	<-----	<-----	<-----	<-----
27A	CABLE ADJUSTER	W9581-59250 (25mm)	<-----	<-----	<-----	<-----	<-----
27B	CABLE ADJUSTER	W9581-59200 (20mm)	<-----	<-----	<-----	<-----	<-----
28	NUT CABLE ADJUSTER	0208-007-1100	<-----	<-----	<-----	<-----	<-----
28A	NUT CABLE ADJUSTER	W1793-130-9900	<-----	<-----	<-----	<-----	<-----
29	IDLE ADJUSTER (PLASTIC)	1034-853-2000	<-----	<-----	<-----	<-----	<-----
29A	IDLE ADJUSTER (BRASS)	N/A	1034-826- 2002	1034-826- 2002	N/A	N/A	N/A
30	SPRING	1290-963-2000	<-----	<-----	<-----	<-----	<-----
30A	NUT	N/A	94002- 0508-OS	<-----	N/A	N/A	N/A
31	COLLAR	1118-A35-7000	<-----	<-----	<-----	<-----	<-----
32	BOWL VENT PIPE COMP (FOR QUAD VENT)	N/A	N/A	N/A	1699-KZ3- 6900	<-----	<-----

PJ Carburetor Exploded View



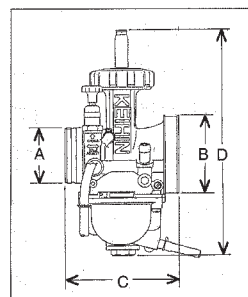
NOTE: Do not remove parts that are not shown on this exploded view.

PJ Carburetor Parts List

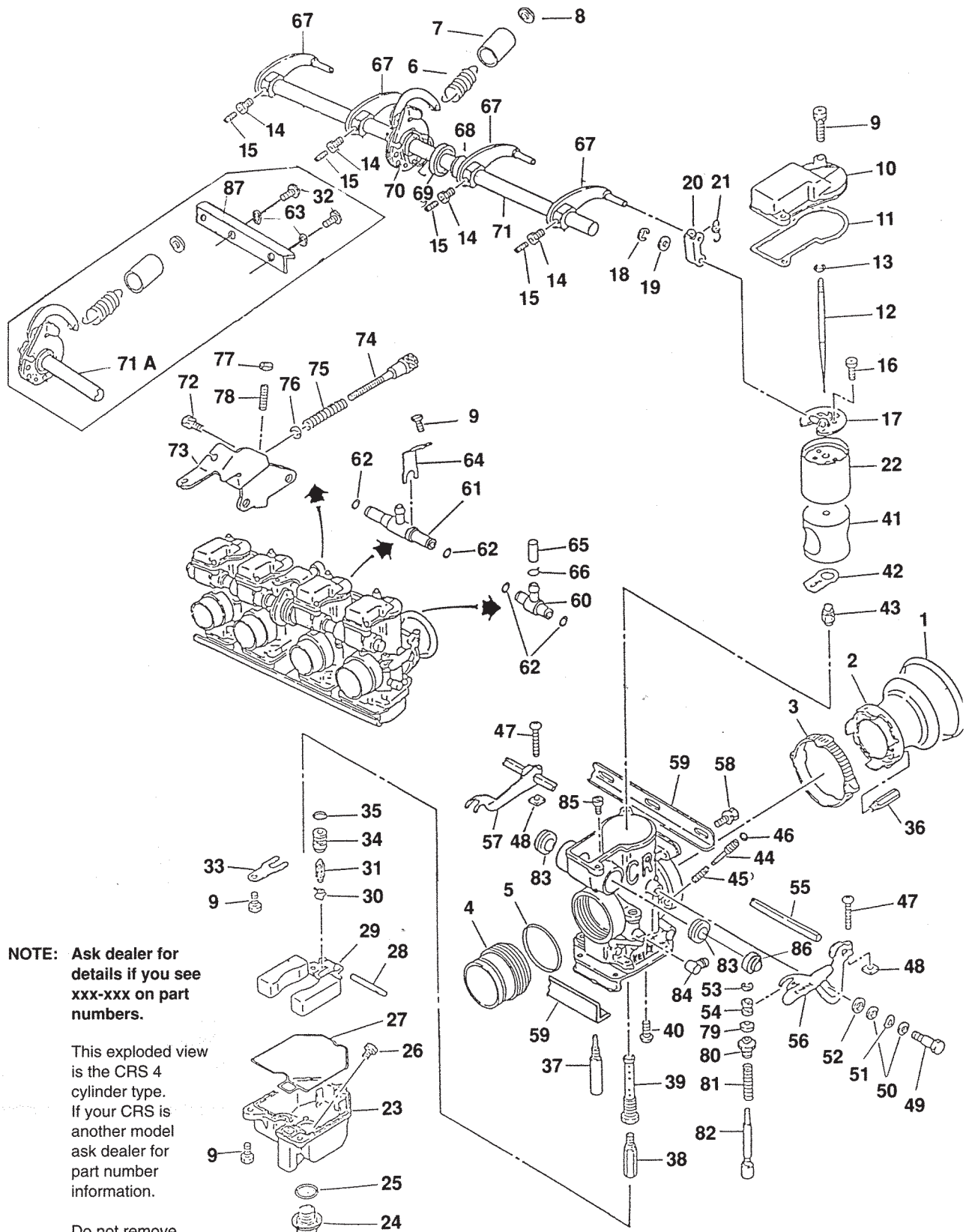
NO.	DESCRIPTION	PART NO.		
		34MM	36MM	38MM
1	Cap, Cable Adj.	16118-166-0040	←	←
2	Cable Adjuster	W9581-59250	←	←
3	Nut, Cable Adj.	W1793-130-9900	←	←
4	Top	W1591-130-9910	←	W1591-131-9910
5	Gasket, Top	16110-NC8-0040	←	16110-ND5-7610-M1
6	Throttle Spring	16050-KA3-7610-M1	16050-KA4-7710-M1	16050-KA5-6910-M1
7	Cable Holder	16137-KA3-7610-M1	←	←
8	Collar	16066-KA3-7610-M1	←	←
9	Spring	16051-KA3-7610-M1	←	←
10	Clip, Jet Needle	16115-169-0040	←	←
11	Jet Needle	N427-48xxx	←	←
12	Throttle Valve	W1502-2Jx-9900	N502-22xx 0-00	N502-23xx 0-00
13	Starter Valve	16046-KA3-7610-M1	←	16046-KA5-6911
14	Air Adj. Screw	W1446-231-9900	←	←
15	Spring	W1711-416-9900	←	←
16	Main Jet	99101-357-xxx0	←	←
17	Slow Jet	N424-21xxx	←	←
18	Buffer Plate	16185-KA3-7610-M1	←	←
19	Bowl Vent Pipe	95003-07033-31	←	←
20	Clip	W9535-35000	←	←
21	Float Valve	16155-ND4-7510-M1	←	←
22	Clip, Float Valve	W1782-013-9900	←	←
23	Float Pin	W9525-25250	←	←
24	Float	W1310-079-9921	←	←
25	Gasket, Float Bowl	16163-ND4-7510-M1	←	←
26	Float Bowl	W1350-289-9910	←	←
27	Anchor Plate	16179-428-6711	←	←
28	Screw, Float Bowl	93892-04016-18	←	←
29	Plug Screw Washer	16173-001-0040	←	←
30	Plug Screw	16162-ND4-7511-M1	←	←
31	Overflow Pipe	95003-05027-31	←	←

NOTE: Ask dealer for details if you see xxx-xxx on part numbers.

SIZE	A	B	C	D
PJ 34MM	41	59	91	174.0
PJ 38MM	45	63	91	183.0



CRS (4 Cylinders) Exploded View



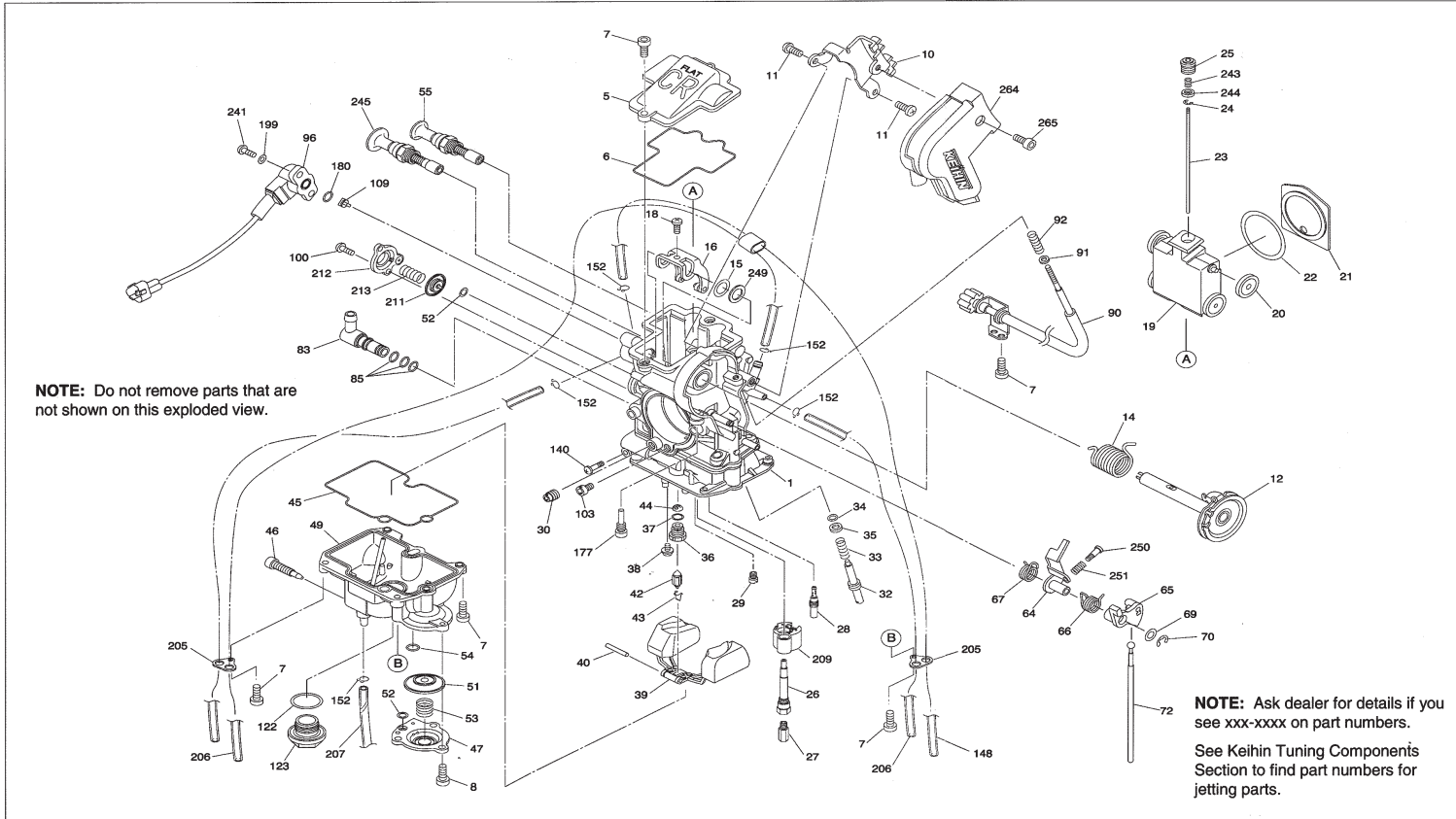
CRS (4 Cylinders) Parts List

NO.	DESCRIPTION	PART NO.	
		35MM - 39MM	26MM - 33MM
1	Rubber Cap	1028-809-7000	R028-004-7000
2	Velocity Stack SH.	1130-802-2001	1130-800-2001
2A	Velocity Stack LN.	1130-803-2001	1130-801-2001
3	Clamp	1129-804-7000	1129-803-7000
4	Mount Adaptor	1253-xxx-xxxx	<—
4A	Mount Adaptor	N195-xxxx	<—
5	O-ring	0901-012-6000	0901-812-6000
6	Tension Spring	1291-804-2000	<—
7	Tube	0804-846-0000	<—
8	Collar	1118-878-2000	<—
9	Screw	4139-802-1100	<—
10	Top	1030-814-2002	<—
11	Gasket	1031-802-2002	<—
12	Jet Needle	N427-51xxx	N427-11Yxx
12A	Jet Needle	N/A	N427-12Yxx
13	Clip	0403-802-1000	<—
14	Lock Nut	0208-803-1200	<—
15	Stop Screw	1034-814-2000	<—
16	Screw	W9155-04060	<—
17	Valve Plate	1019-801-2102	1019-802-2102
18	Clip	16179-676-3000	<—
19	Plain Washer	0301-825-7000	<—
20	Link Arm	1061-805-2000	<—
21	Spring	1291-802-2000	<—
22	Throttle Valve	N502-03x00	N502-04x00
23	Float Bowl	1050-825-2000	<—
24	Drain Screw	1018-801-2000	<—
25	O-ring	16173-001-0040	<—
26	Starter Jet	1001-108-2000-xxx	<—
27	O-ring	0901-811-6000	<—
28	Arm Pin	W9525-25250	<—
29	Float	1052-818-2100	<—
30	Clip	0405-019-1000	<—
31	Needle Valve	16115-ZG8-L100	<—
32	Screw	N114-06161	N/A
33	Plate	1164-038-2000	<—
34	Valve Seat	N360-01x00	<—
35	O-ring	16075-MB0-0030	<—
36	Main Air Jet	N424-14xxx	<—
37	Slow Jet	N424-24xxx	<—
38	Main Jet	99101-357-xxx0	<—
39	Nozzle Holder	N413-04x00	<—
39A	Nozzle Holder	N426-04000	<—
40	Screw	4115-800-1101	<—
41	Jet Block	1605-xxx-2001	<—
42	Gasket	1202-808-2002	1202-809-2002
43	Needle Jet	1041-800-2001	<—

NO.	DESCRIPTION	PART NO.	
		35MM - 39MM	26MM - 33MM
44	Air Screw	1014-004-2002	<—
45	Spring	1290-003-2001	<—
46	O-ring	0901-006-6000	<—
47	Screw	4110-806-1100	<—
48	Nut	0205-800-1100	<—
49	Bolt	0118-801-1100	<—
50	Plain Washer	0301-009-1100	<—
51	Wave Washer	2007-800-2000	<—
52	Plain Washer	0301-104-7000	<—
53	Clip	W9302-25000	<—
54	Collar	1118-801-2000	<—
55	Shaft	1111-813-2000	<—
56	Lever	1113-861-2001	<—
57	Lever	1113-862-2000	<—
58	Screw	4139-803-1100	<—
59	Bracket	1190-833-2000	<—
59A	Bracket	N/A	1190-853-2001
59B	Bracket	N/A	1190-854-2001
59C	Bracket	N/A	1190-855-2001
60	T-joint	1077-804-7000	<—
61	T-joint	1077-803-7000	<—
62	O-ring	W9351-13057	<—
63	Washer	0301-090-1201	N/A
64	Plate	1190-832-2000	<—
65	Rubber Cap	1028-808-7000	<—
66	Clip	W9535-55000	<—
67	Link Lever	1100-836-2100	<—
68	Collar	1118-861-7000	<—
69	Collar	1118-860-7000	<—
70	Spring	1305-883-2000	<—
71	Throttle Shaft	5025-847-2200	<—
71A	Throttle Shaft	5025-931-2100	N/A
72	Screw	4139-803-1100	<—
73	Bracket	1190-xxx-xxxx	<—
74	Idle Speed Screw	1034-808-2000	<—
75	Spring	1290-849-2003	<—
76	Plain Washer	16178-ML7-0040	<—
77	Nut	94001-05080-0S	<—
78	Screw	93500-05025-1H	<—
79	Rubber Cap	1028-042-7001	<—
80	Cap	1029-805-7000	<—
81	Spring	1300-136-2000	<—
82	Starter Valve	1166-802-2101	<—
83	Seal	1099-805-7000	<—
84	L-joint	1074-817-7001	<—
85	Starter Jet	1001-108-2000-xxx	<—
86	Cap	1096-810-2000	<—
87	Bracket	1190-870-2000	N/A

NOTE: See Tuning Components Section to find part numbers for jetting parts.

FCR-MX Exploded View



FCR-MX Parts List

#	DESCRIPTION	PART NO.
5	Top	1030-897-2000
6	Gasket	1202-895-6000
7	Screw (M4 x 12)	0136-806-1100
8	Screw (M4 x 8)	0136-808-1100
10	Bracket	1190-840-2101
11	Screw	93500-05008-1H
12	Throttle Shaft Comp.	5025-B35-2201
14	Coil Spring	1305-A83-2000
15	Washer	0301-092-7000

#	DESCRIPTION	PART NO.
16	Link Arm Comp.	1061-831-2101
18	Stop Screw	4110-825-1100
19	Throttle Valve	N501-49C01
20	Roller	1119-803-7002
21	Plate	1609-809-2100
22	Seal	1099-817-6000
23	Jet Needle	N427-0Cxxx
24	Clip	0403-802-1000
25	Set Screw	1421-802-2000
26	Main Nozzle	1154-842-2000

#	DESCRIPTION	PART NO.
27	Main Jet	99101-357-xxx0
28	Slow Jet	N424-21xxx
29	Starter Jet	99101-393-xxx0
30	Slow Air Jet	99101-124-xxx0
32	Pilot Screw	N446-26A00
33	Coil Spring	1290-812-2000
34	O-Ring	16075-KG8-9010-M1
35	Washer	0301-803-2000
36	Valve Seat 3.2-4mm	N361-04xx1
37	O-Ring	16958-397-7710-M1

#	DESCRIPTION	PART NO.
38	Screw	0118-806-1100
39	Float Comp.	1052-856-2100
40	Arm Pin	W9525-25250
42	Float Valve 3.2-4mm	1062-814-2101
43	Clip	0405-019-1000
44	Fuel Screen	2009-811-2100
45	O-Ring	1202-896-6000
46	Drain Screw	1198-810-2002
47	Cover	1230-826-2002
49	Float Bowl Comp.	1050-948-2101

#	DESCRIPTION	PART NO.
51	Diaphragm Comp.	1201-858-2700
52	U-Ring	W9353-36000
53	Coil Spring	1300-142-2000
54	O-Ring	16178-548-0040
55	Starter Valve Comp.	1166-844-2100
64	Link Lever	1100-914-2100
65	Link Lever #2	1100-915-7000
66	Coil Spring #1	1305-B01-2001
67	Coil Spring #2	1305-A82-2000
69	Washer	W1795-223-9900
70	E-Clip	16179-676-3000
72	Rod	1458-858-2001
83	Fuel Joint	1074-892-2100
85	O-Ring	W9351-13057
90	Idle Speed Screw	1034-815-4500
91	Washer	0301-078-1200
92	Coil Spring	1300-112-2000
96	TPS	1614-862-2100
100	Screw (M4 x 8)	0136-804-1100
103	Main Air Jet	99101-393-xxx0
109	Collar	16145-MZ2-7800
122	O-Ring	16173-001-0040
123	Drain Bolt	16162-ND4-7511-M1
140	Screw	0110-804-1200
148	Vent Hose	0803-884-0100
152	Hose Clip	W9535-35000
177	Stop Screw	1034-905-2000
180	O-Ring	16978-ZB9-0050
199	Washer	0301-261-36G5
205	Hose Retainer	16179-KZ4-6900
206	Vent Hose	0803-878-0000
207	Vent Hose	95003-07033-31
209	Buffer Plate	1157-812-7000
211	Diaphragm Comp.	W1470-MW0-7500
212	Cover	1230-850-2000
213	Coil Spring	1290-A19-2000
241	Screw (Torx)	0137-261-36G5
243	Coil Spring	1290-A65-2000
244	Collar	1118-B36-2000
245	Hot Start Valve	1166-845-2100
249	Washer	W1795-164-9900
250	Stop Screw	16124-KR3-6010-M1
251	Coil Spring	16053-KT7-0030
264	Cover	1230-869-7001
265	Cover Screw	0136-839-1100